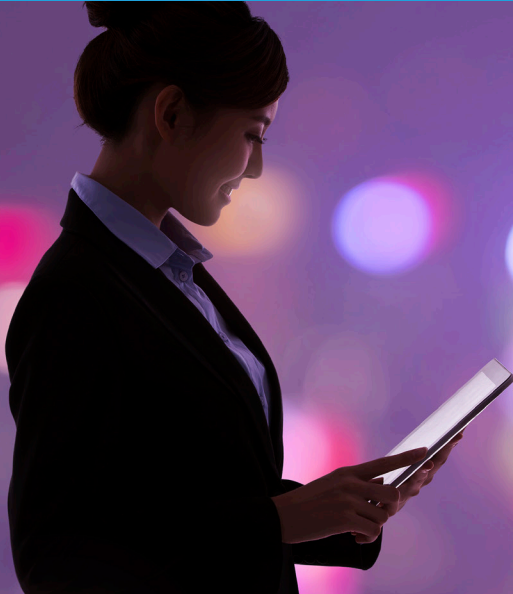


# Sprinxle Delivers the Value of Intel® vPro™ Technology and Microsoft System Center Configuration Manager\*



## Improve Manageability and Security for Today's Mobile Workforce

The digital economy is reshaping priorities for business leaders. Top concerns for today's businesses include security, interoperability, and fully utilizing the capabilities in their technology investments. Achieving desired outcomes demands a seamless and transparent technology experience from the backroom to the boardroom. A new solution from Sprinxle addresses these challenges by enabling organizations to take full advantage of Intel® vPro™ technology and Microsoft System Center Configuration Manager\* (Microsoft SCCM\*).

Sprinxle brings proven expertise delivering solutions and services that help organizations realize the full value of their Intel® technology-based investments. Sprinxle's latest solution, the Sprinxle for SCCM App\*, makes Intel vPro capabilities available directly within the Microsoft SCCM console. This eliminates integration issues for IT and provides businesses with a solution that is greater than the sum of its parts. Most importantly, it brings a comprehensive set of capabilities to secure and manage devices, networks, identities, data, and applications.

## Management and Security at Both Hardware and Software Layers

The Sprinxle for SCCM App acts as middleware, bringing the Intel® hardware and Microsoft software layers together to maximize the capabilities of both—delivering greater business value and IT control.

- Maximize the value of your Intel vPro and Microsoft SCCM investments
- Manage devices both in-band and out-of-band
- Simplify activation, provisioning, monitoring, troubleshooting, and security processes
- Secure lost or stolen devices with remote secure erase
- Save time and costs of desktide IT visits at multiple locations
- Improve device access and monitoring to meet compliance requirements

Devices based on Intel vPro technology, such as those powered by 6th gen Intel® Core™ vPro™ processors, are available in a wide array of form factors—making it even more likely that you've already invested in Intel vPro technology. With Sprinxle, you can make that investment count.

## In-Band versus Out-of-Band Management

### Software-Based Manageability



Microsoft  
**System Center**  
Configuration Manager

**In-Band  
Remote  
Management**

Accomplishes most remote systems management at the software layer as long as the OS is working and the device is turned on.

**Sprinxle for SCCM App\* integrates Microsoft SCCM\* with Intel® vPro™ technology to provide a complete and seamless remote management solution.**

### Hardware-Based Manageability: Intel® vPro™ Technology

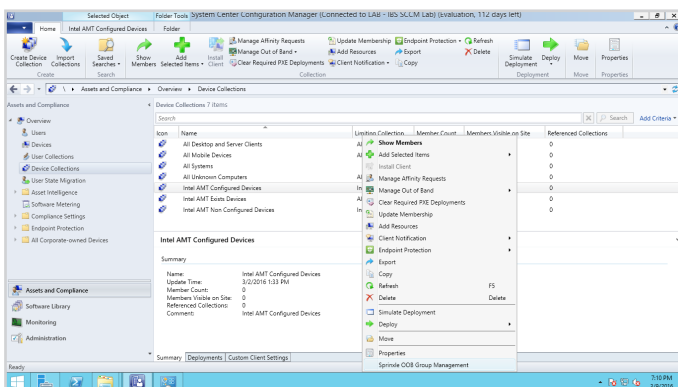
- Remote Secure Erase
- Remote KVM
- Remote Power
- Remote Imaging
- Serial over LAN

**Out-of-Band  
Remote  
Management**

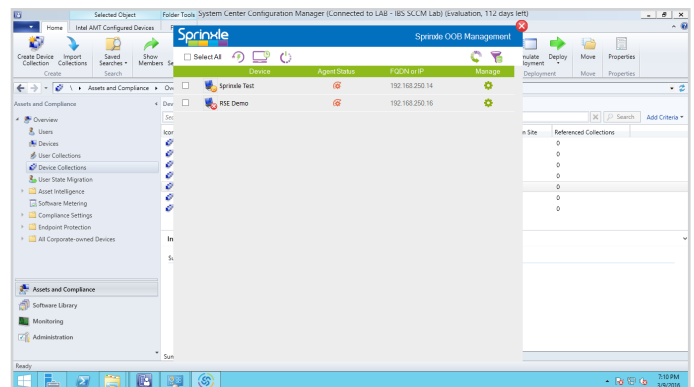
Intel vPro technology allows remote management at the hardware layer regardless of OS or power state

## In-Band and Out-of-Band Management

1. In-band management occurs locally through the business network; however, if the network is down, IT cannot access devices.
2. Out-of-band (OOB) management provided by Intel® vPro™ Technology, allows IT to securely manage, remediate, and repair devices at the hardware layer, regardless of OS or power state.
3. The Sprinxle for SCCM app integrates Intel vPro technology's latest OOB capabilities with Microsoft SCCM, giving businesses critical control over devices, data, security, compliance, and applications.



Sprinxle out-of-band management with right-click



Sprinxle out-of-band group device management

## Activating and Managing Intel® vPro™ Technology-Based Devices

The Sprinxle for SCCM App speeds the activation and simplifies the management of Intel vPro technology.

Microsoft SCCM and Intel vPro Technology Feature Set	Without Sprinxle for SCCM App*	With Sprinxle for SCCM App
Remote Power Management	✓	✓
Wake-Up Event Scheduling	✓	✓
Hardware/Asset Inventory	✓	✓
Event Logs/Access Logs	✓	✓
Remote KVM		✓
BIOS Boot		✓
Group Device Management		✓
Reboot to Image		✓
Remote Power Management: Immediate Power On		✓
Remote Secure Erase (new)		✓
Wireless Profile Configuration		✓

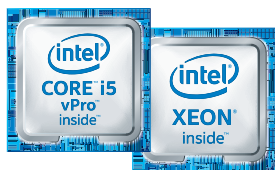
Activation Process	Managing with Microsoft System Center Configuration Manager* Only	Managing with Microsoft SCCM* and Sprinxle for SCCM App*
Auto-Provisioning Availability		✓

Platforms	Usability with Microsoft System Center Configuration Manager* Only	Usability with Microsoft SCCM* and Sprinxle for SCCM App*
AMT Version 6–8	✓	✓
AMT Version 9–11		✓

## Intel® vPro™ Technology

Intel® vPro™ technology brings a comprehensive set of security, manageability, and productivity-enhancing capabilities. This technology is built into the new Intel® Core™ vPro™ processor family, the Intel® Xeon® processor E5-2600, E5-1600, and E5-1200 product families, Intel® chipsets, and network adapters. Sprinxle can help you identify the capabilities in your Intel®-based technologies and systems, and get the most value for your investment.

In addition to its collaboration and productivity benefits, Intel vPro technology protects against difficult-to-detect, penetrating rootkits and malware that threaten users working in cloud or virtual environments. It combines several hardware-based features for centralized image management and administration, secure network storage, and out-of-band protection—all beyond the firewall.



## Microsoft SCCM\*

Microsoft SCCM\* provides a single management console, simplifying deployment and management of Windows\*. It supports the new features in Windows\* 10, unified end-user portals, on-premises mobile device management, and multiple devices in bring your own device (BYOD) environments. Microsoft SCCM helps organizations streamline operations with a unified infrastructure that integrates device management and protection across mobile, physical, and virtual environments. It enables users to access business applications on any device, from anywhere, while helping to safeguard business information.



Maximize your investment in industry-leading Intel and Microsoft solutions with Sprinxle.  
Learn more at: [sprinxle.com](http://sprinxle.com)

Find out more about Intel® vPro™ technology at: [intel.com/vpro](http://intel.com/vpro)



Sprinxle Headquarters  
18100 Von Karman Avenue, Suite 850  
Irvine, CA 92612

Contact Sales: [Sales@Sprinxle.com](mailto:Sales@Sprinxle.com)  
Contact Support: [Support@Sprinxle.com](mailto:Support@Sprinxle.com)

Software and workloads used in performance tests may have been optimized for performance only on Intel® microprocessors. Performance tests such as SYSmark\* and MobileMark\* are measured using specific computer systems, components, software, operations, and functions. Any change to any of those factors may cause the results to vary. You should consult other information and performance tests to assist you in fully evaluating your contemplated purchases, including the performance of that product when combined with other products. For more complete information, visit [intel.com/performance](http://intel.com/performance).

Intel® technologies may require enabled hardware, specific software, or services activation. Performance varies depending on system configuration. No computer system can be absolutely secure. Check with your system manufacturer or retailer or learn more at [intel.com](http://intel.com).

Copyright © 2016, Intel Corporation. All rights reserved. Intel, the Intel logo, Intel Core, Intel Inside, the Intel Inside logo, Intel vPro, and Xeon are trademarks of Intel Corporation in the U.S. and/or other countries. \*Other names and brands may be claimed as the property of others.

Copyright © 2016, Sprinxle. All rights reserved.